

THE ROYAL HOSPITAL Chelsea

The building of the Royal Hospital of Chelsea and the surrounding area.



Links | Roads

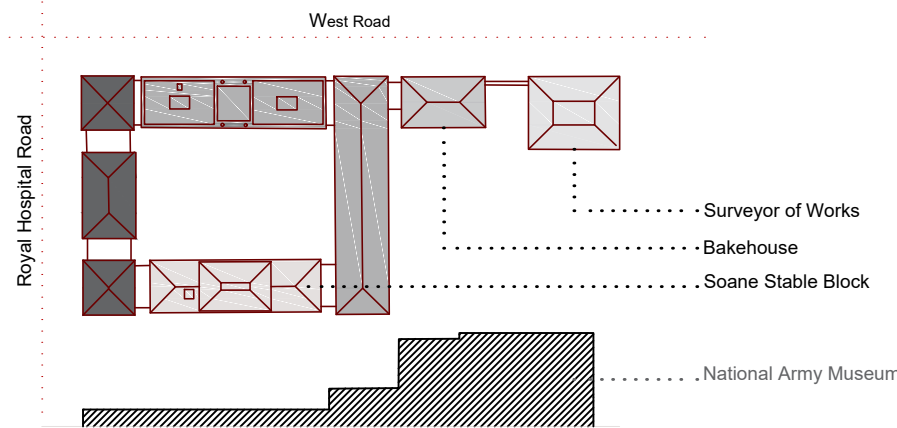
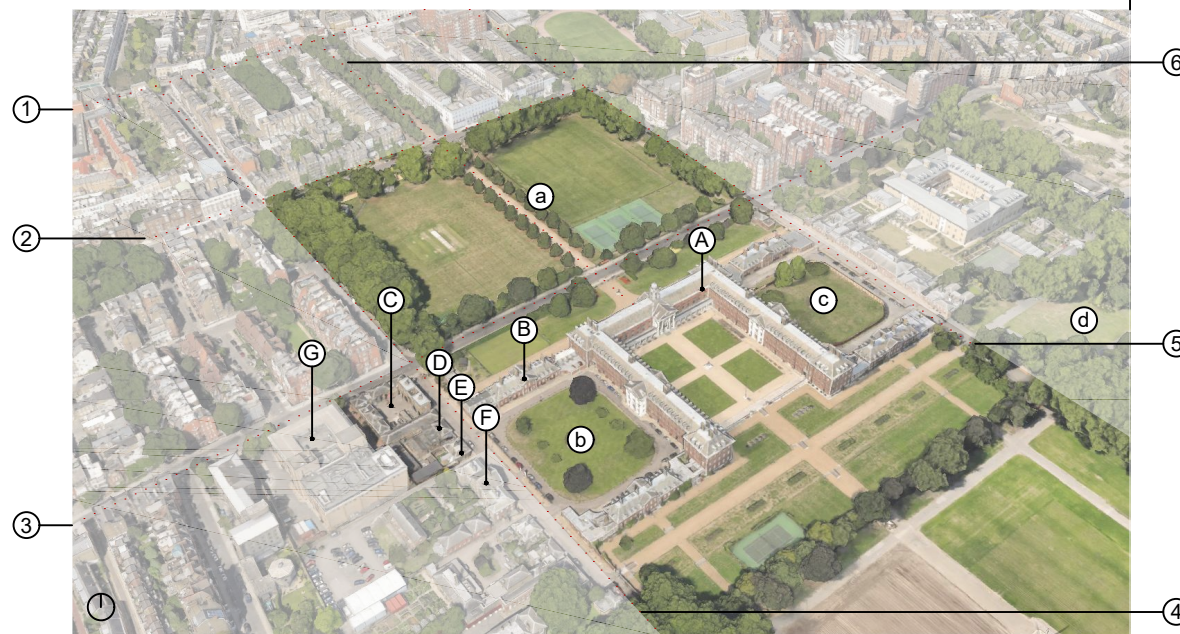
- ① King's Road
- ② St. Leonard's Terrace
- ③ Royal Hospital Road
- ④ West Road
- ⑤ Franklins Row
- ⑥ Royal Avenue

Green Area | Courts and gardens

- a) Burtons Court
- b) College Court
- c) White Horse Court
- d) Renelagh Garden

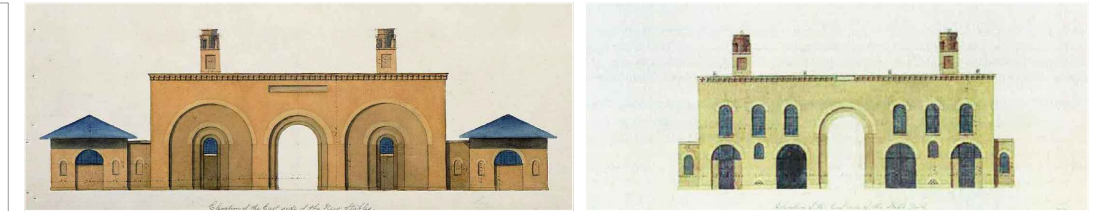
Main Buildings

- A) Royal Hospital
- B) Gordon House
- C) Soane Stables Block
- D) Surveyor of Works Building
- E) Bakehouse
- F) Quartermaster's Stores Building
- G) National Army Museum

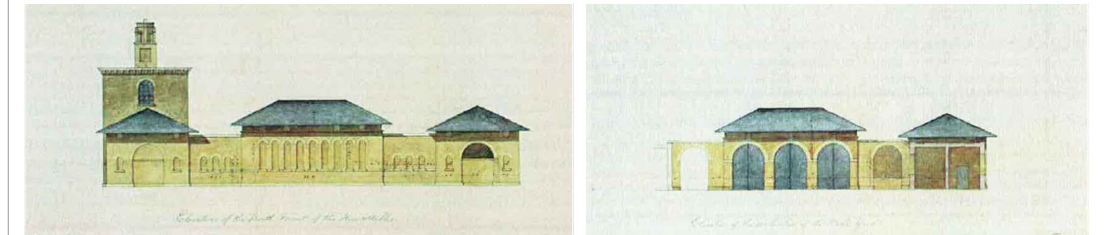


PHOTOS

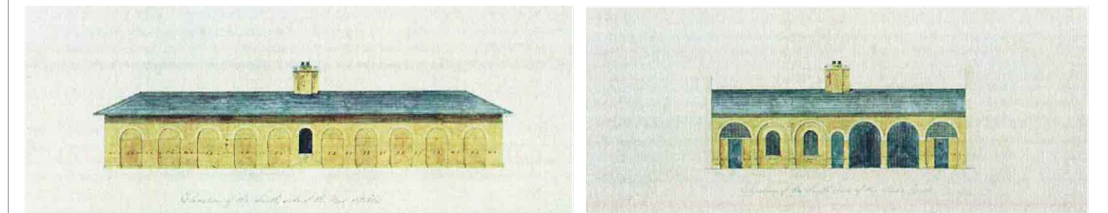
SOANE STABLE BLOCK THE ELEVATIONS | by John Soane



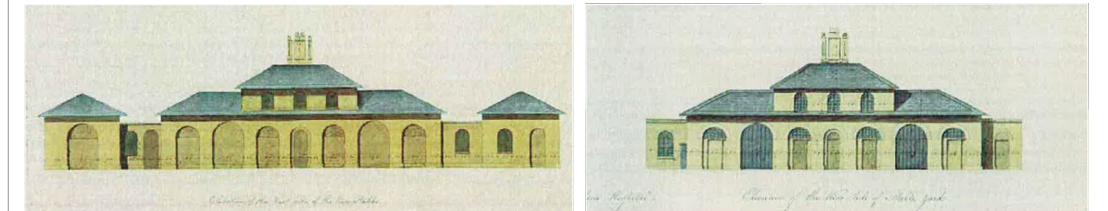
East elevation | from west Road and from Courtyard



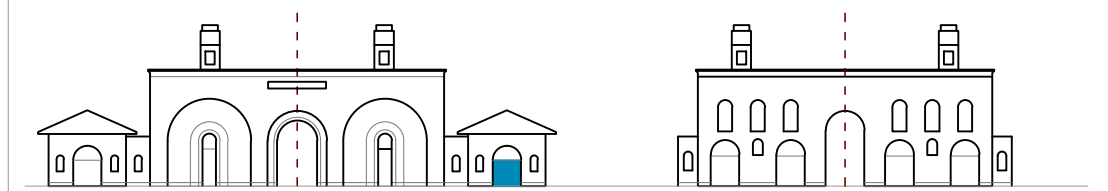
South elevation | from Royal Hospital Road and from Courtyard



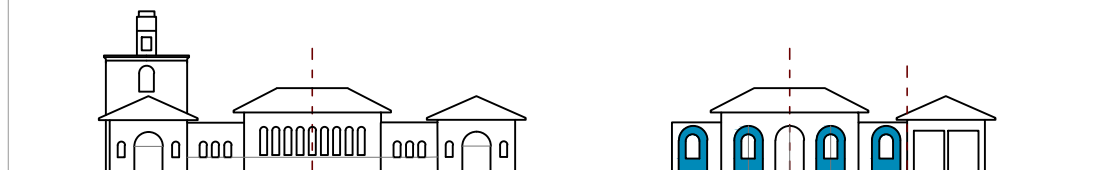
North elevation | from Bakehouse and from Courtyard



West elevation | from National Army Museum and from Courtyard



East elevation | from west Road and from Courtyard



South elevation | from Royal Hospital Road and from Courtyard



North elevation | from Bakehouse and from Courtyard



West elevation | from National Army Museum and from Courtyard

Recent additions
Parts removed