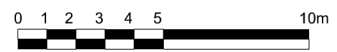
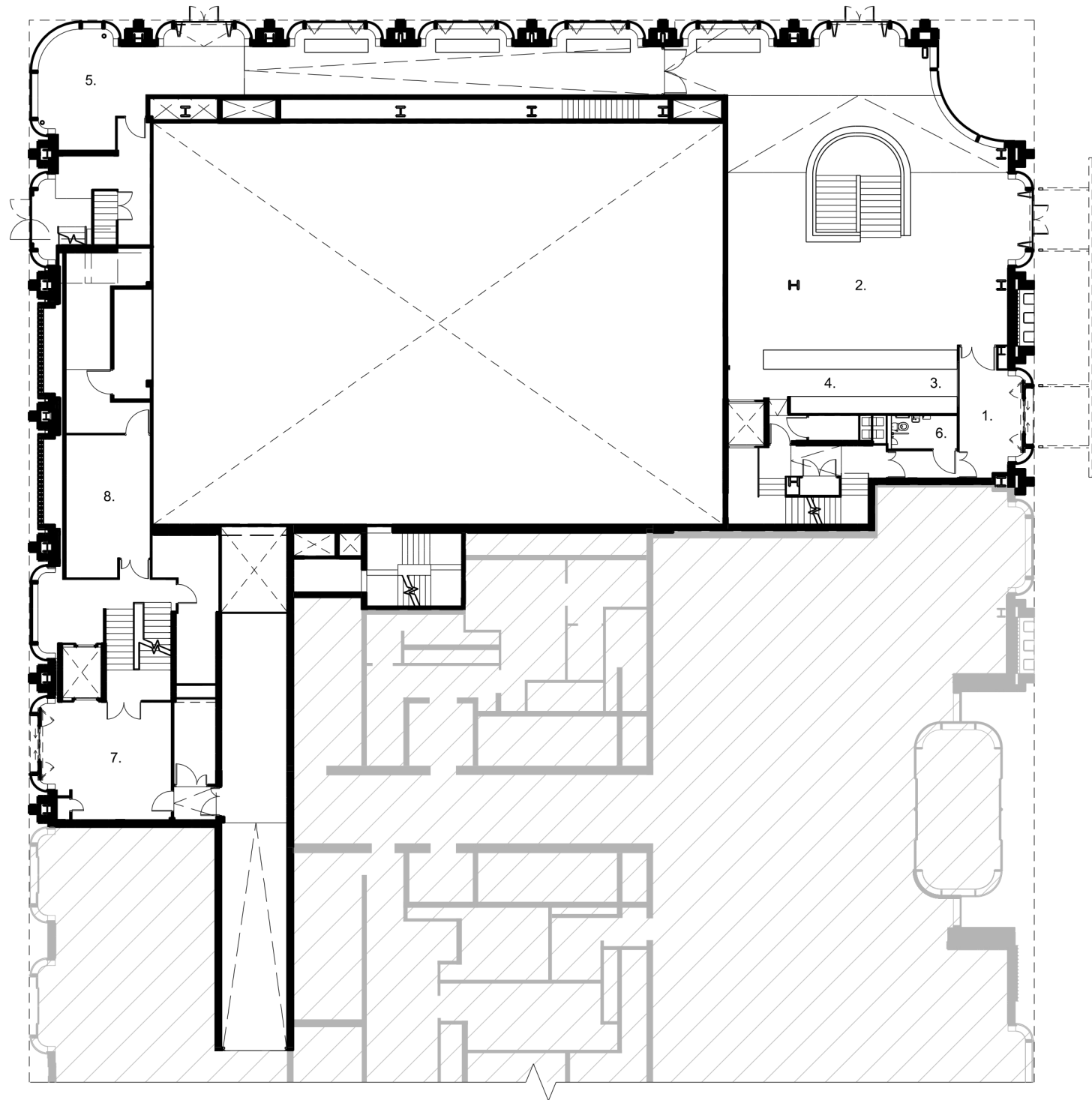


0 10 20 30 40 50m



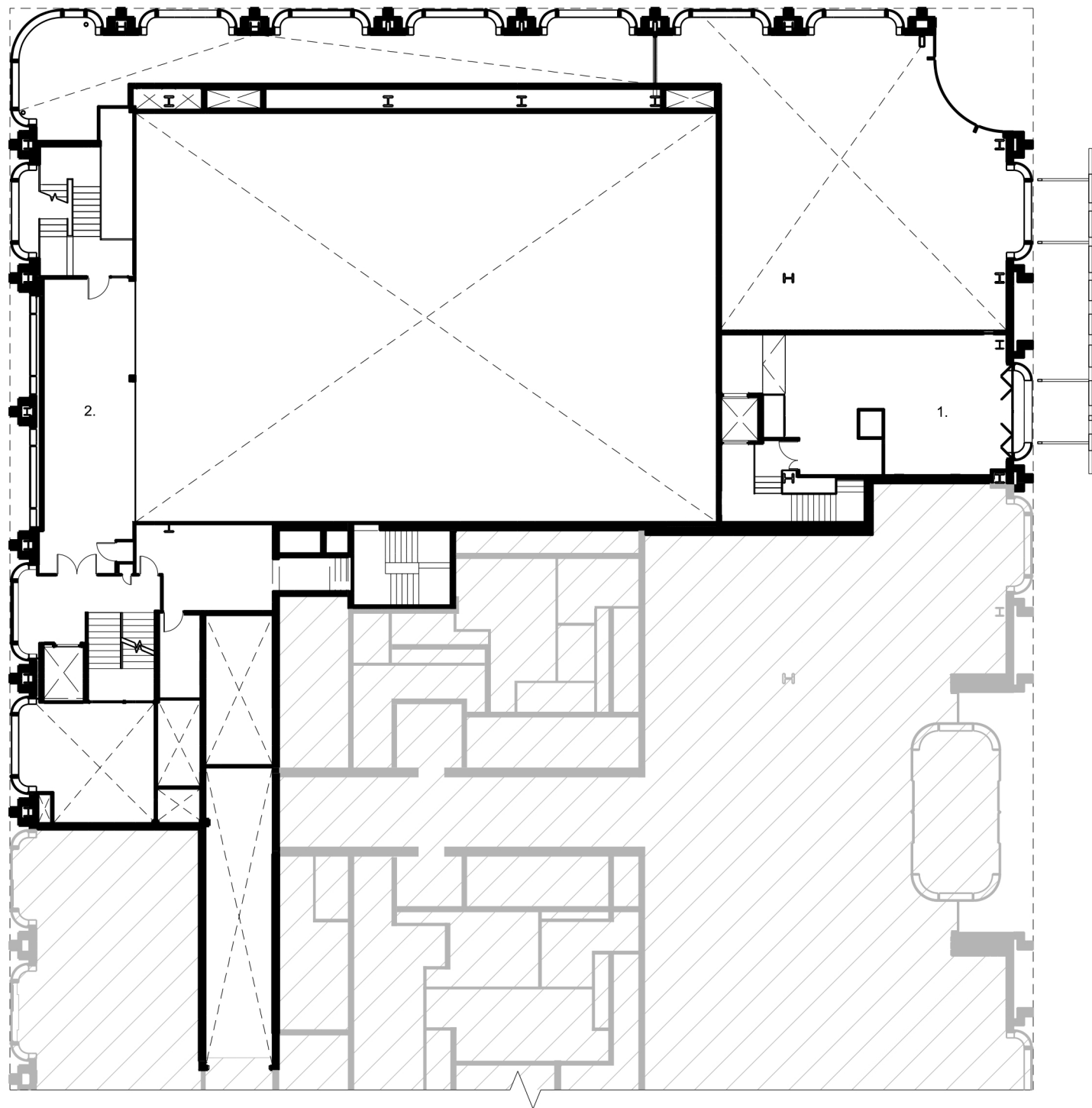
SITE PLAN  
LIGHTROOM, KINGS CROSS, LONDON



G+0 PLAN  
LIGHTROOM, KINGS CROSS, LONDON

KEY:

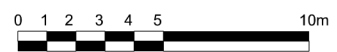
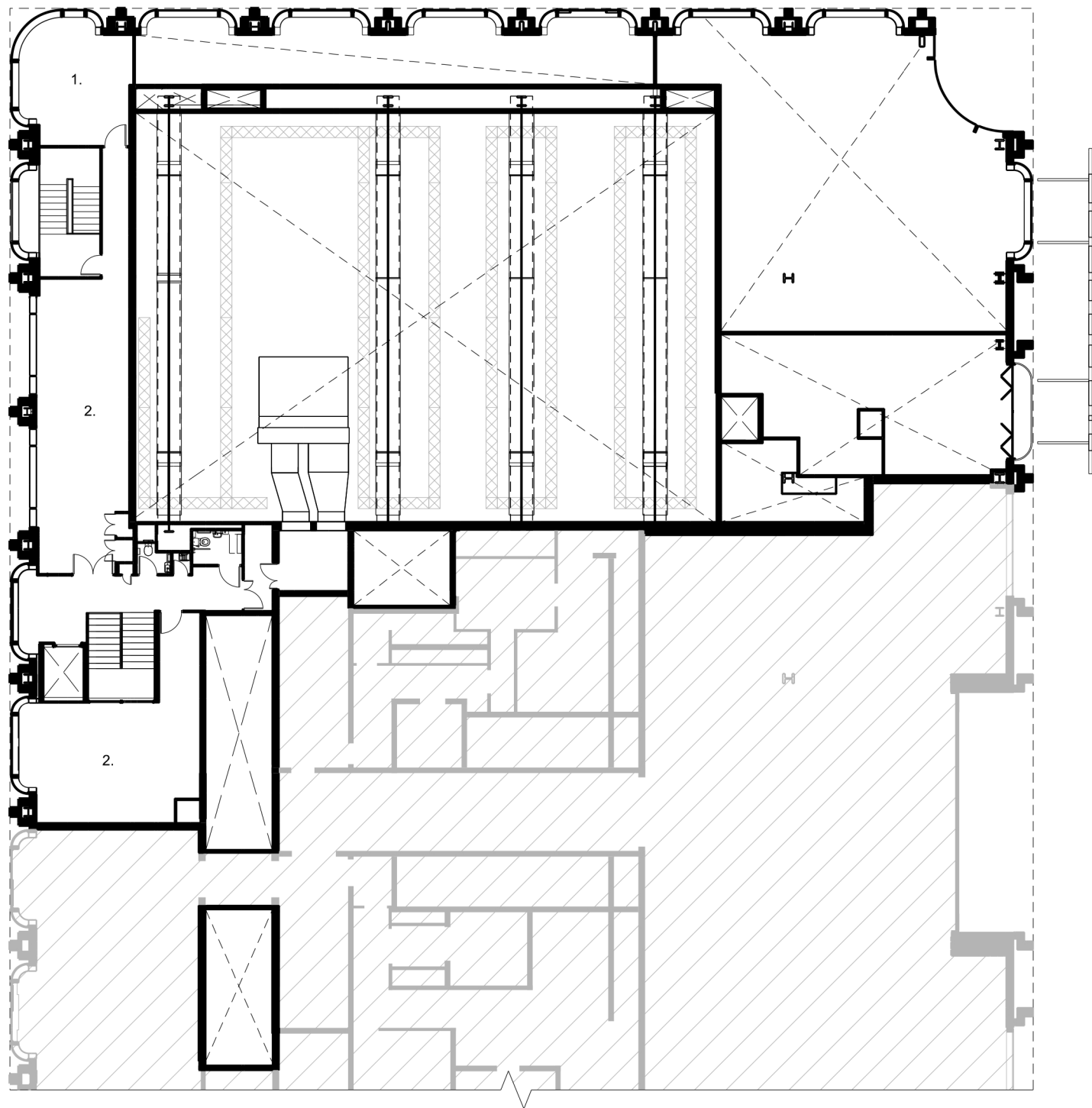
- |                   |                 |
|-------------------|-----------------|
| 1. Entrance Lobby | 6. AWC          |
| 2. Foyer          | 7. Stage Door   |
| 3. Box Office     | 8. Control Room |
| 4. Bar            |                 |
| 5. Shop           |                 |



KEY:

- 1. Studio
- 2. Viewing Gallery

G+1 PLAN  
LIGHTROOM, KINGS CROSS, LONDON

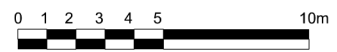
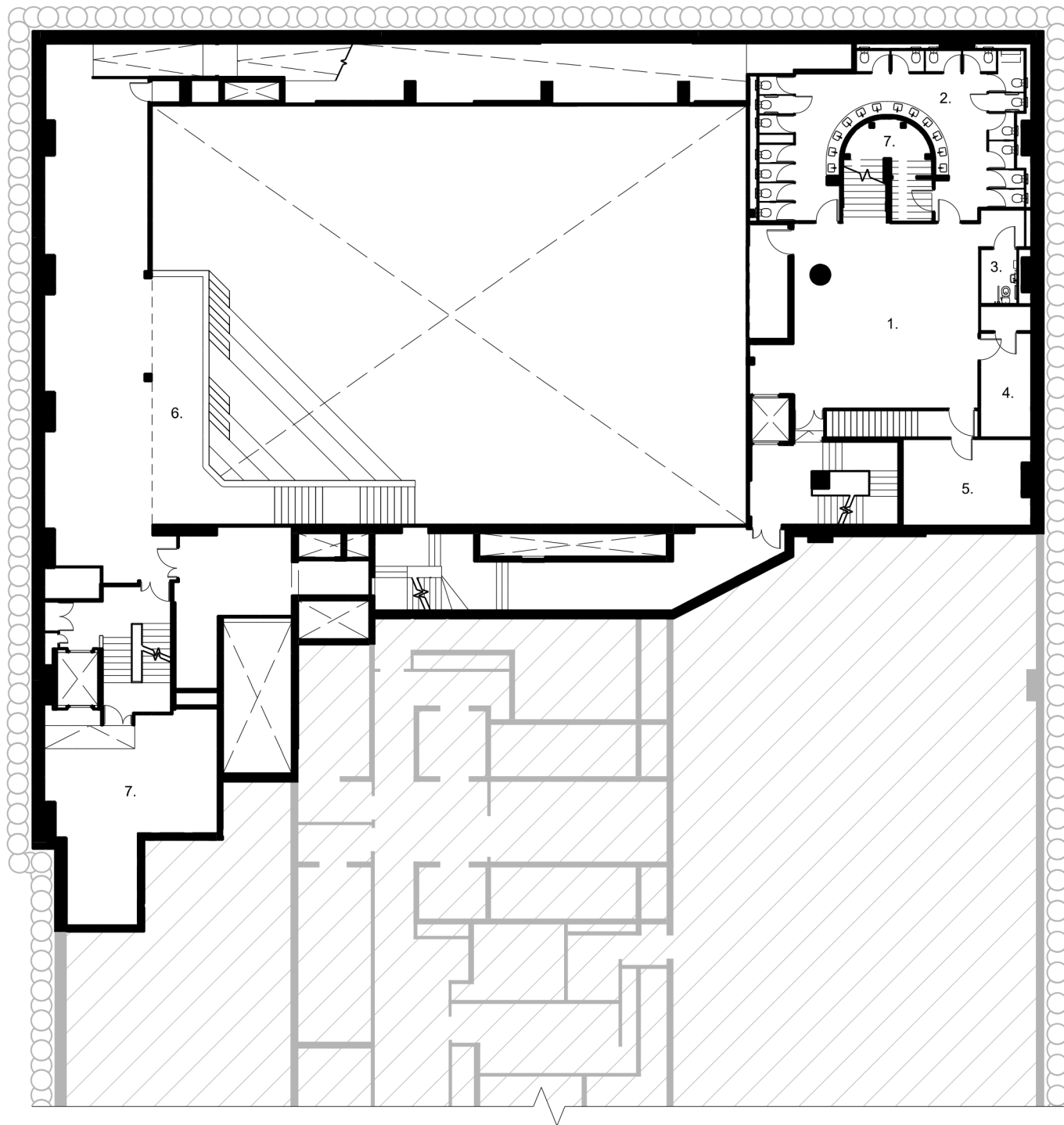


KEY:

- 1. Meeting Room
- 2. Admin

G+2 PLAN  
LIGHTROOM, KINGS CROSS, LONDON

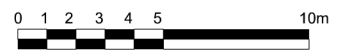
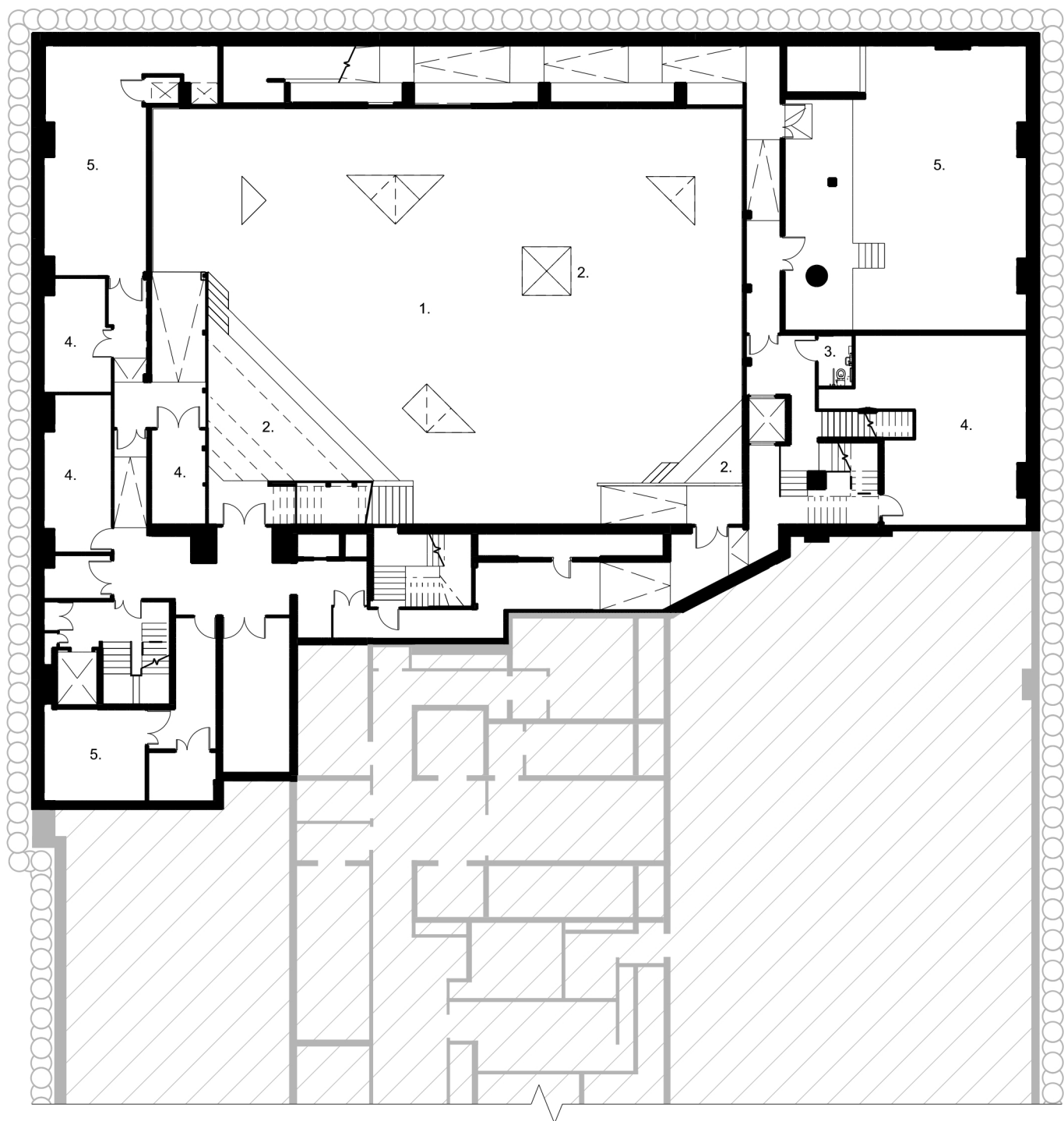




KEY:

- 1. Lower Foyer
- 2. WCs
- 3. AWC
- 4. Cloakroom
- 5. Sensory Room
- 6. Viewing Gallery
- 7. Store

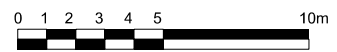
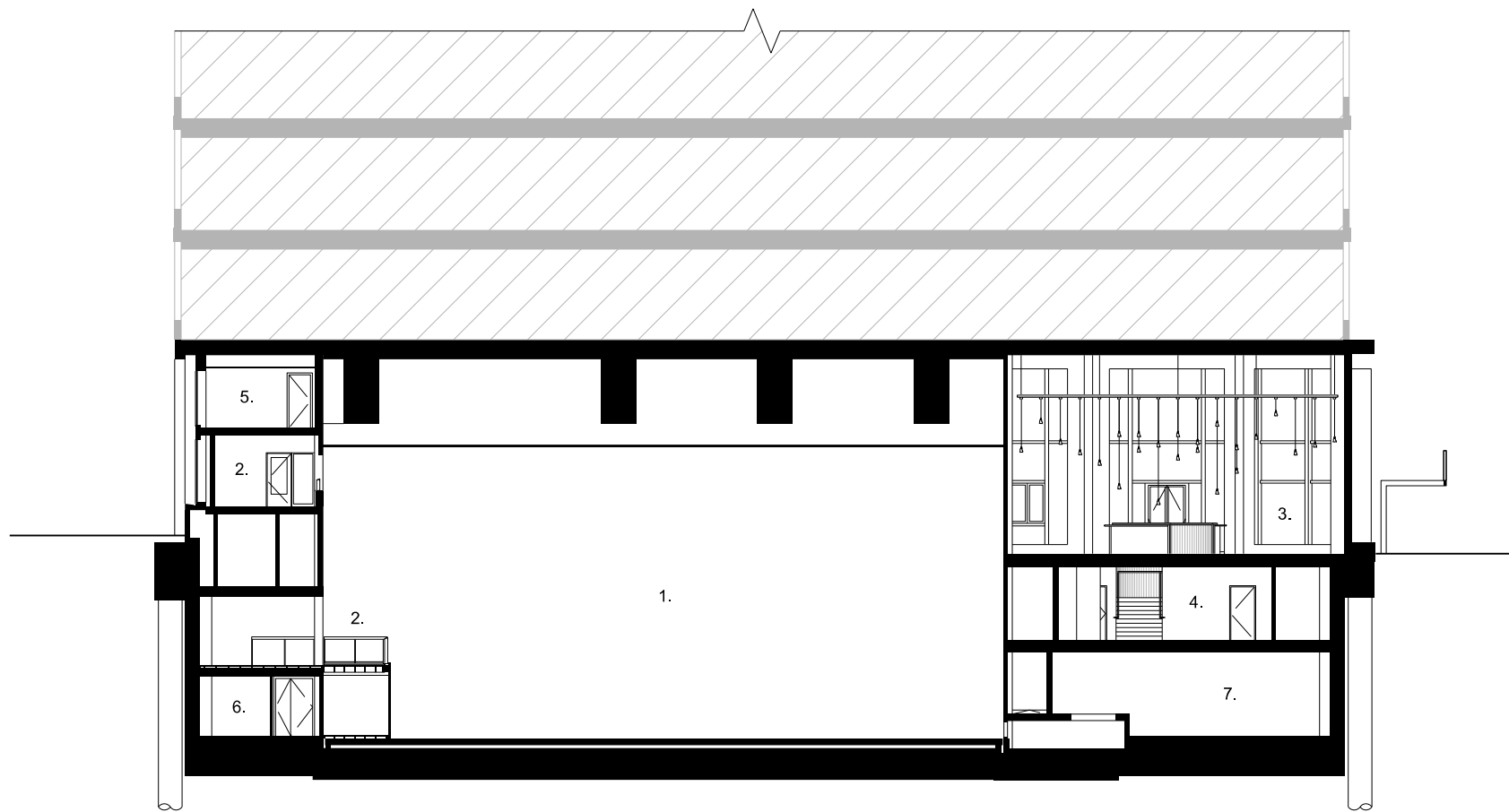
G-1 PLAN  
LIGHTROOM, KINGS CROSS, LONDON



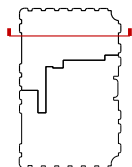
**KEY:**

- 1. Projection Room
- 2. Modular Seating
- 3. AWC
- 4. Store
- 5. Plant Room

G-2 PLAN  
LIGHTROOM, KINGS CROSS, LONDON

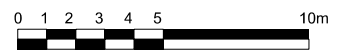
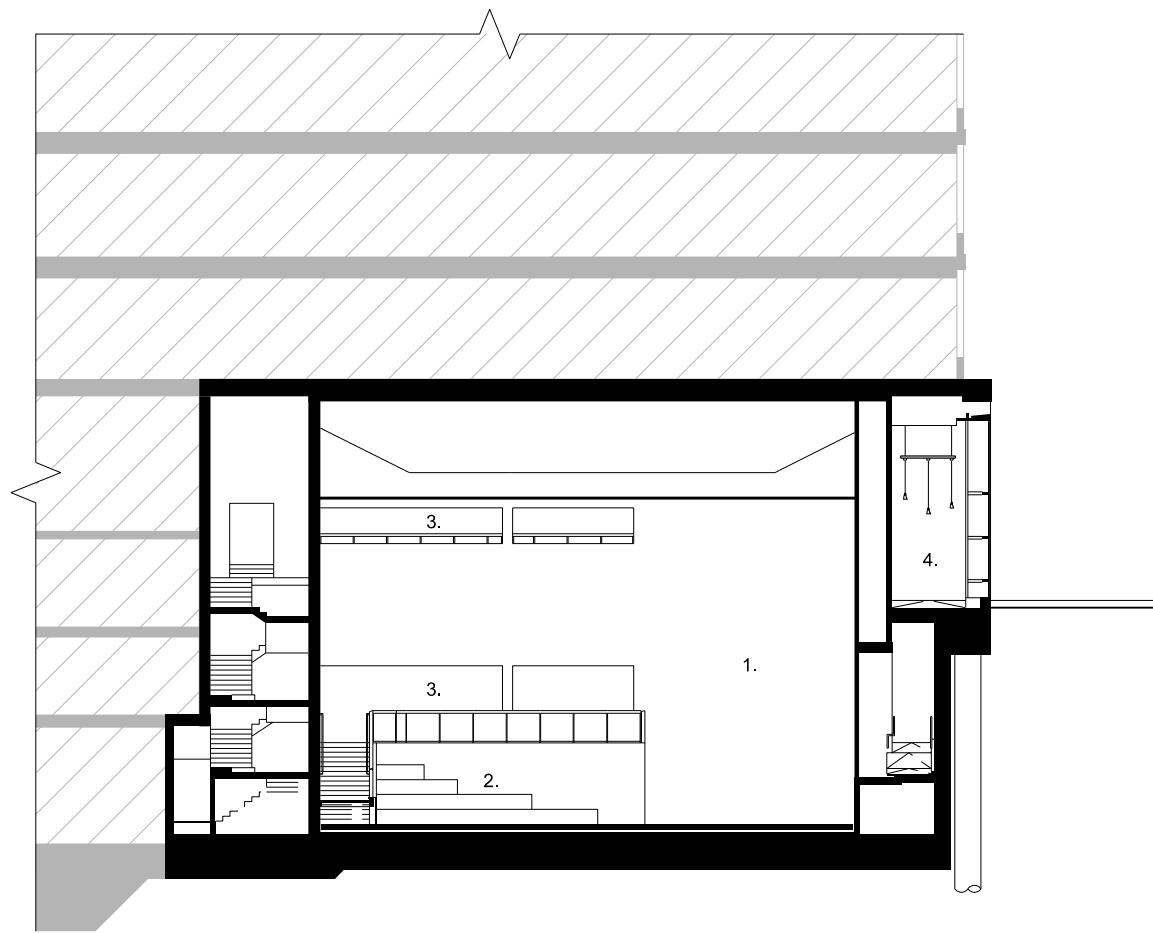


SECTION AA  
LIGHTROOM, KINGS CROSS, LONDON

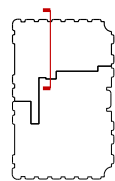


KEY:

- |                    |               |
|--------------------|---------------|
| 1. Projection Room | 6. Store      |
| 2. Viewing Gallery | 7. Plant Room |
| 3. Foyer           |               |
| 4. Lower Foyer     |               |
| 5. Admin           |               |

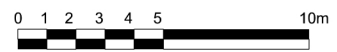
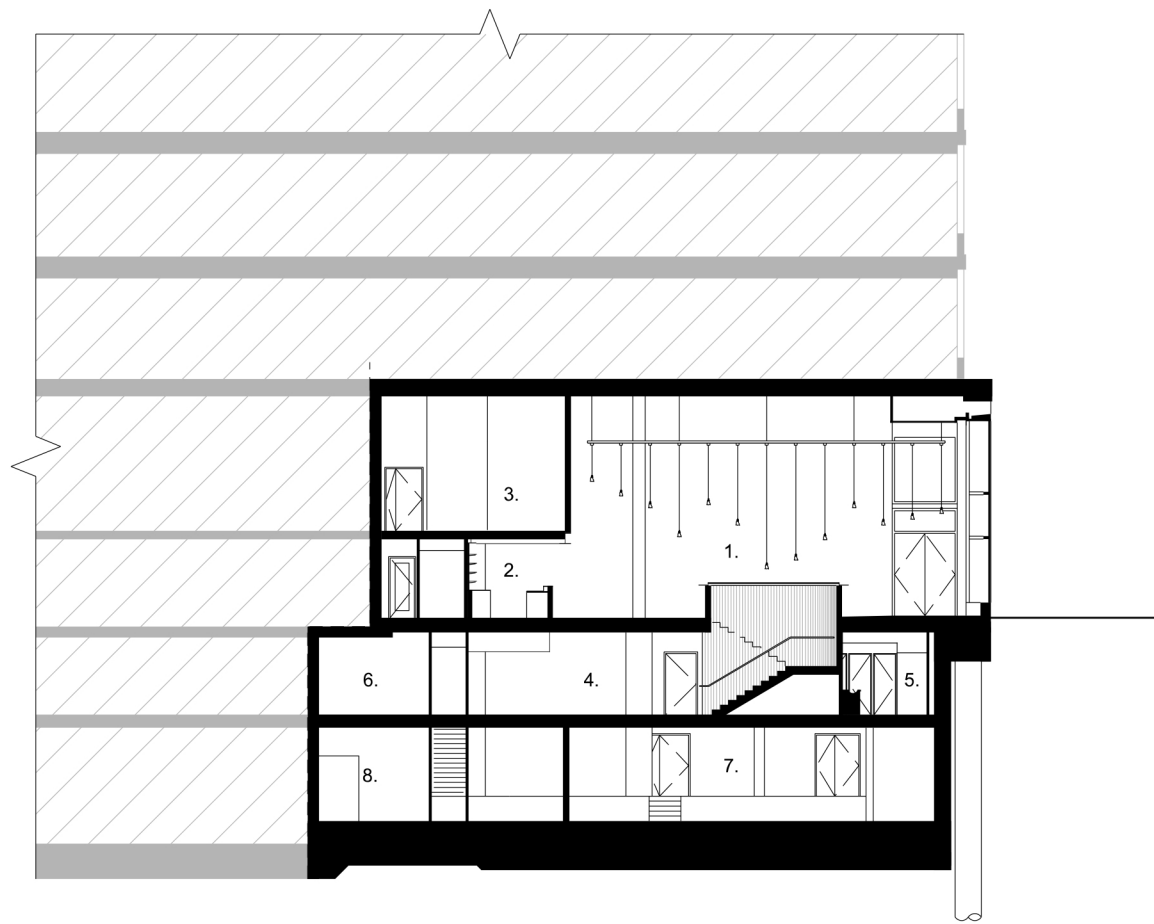


SECTION BB  
LIGHTROOM, KINGS CROSS, LONDON

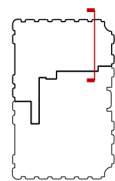


KEY:

- 1. Projection Room
- 2. Modular Seating
- 3. Viewing Gallery
- 4. Foyer



SECTION HH  
LIGHTROOM, KINGS CROSS, LONDON



KEY:

- |                |                 |
|----------------|-----------------|
| 1. Foyer       | 6. Sensory Room |
| 2. Bar         | 7. Plant Room   |
| 3. Studio      | 8. Store        |
| 4. Lower Foyer |                 |
| 5. WCs         |                 |