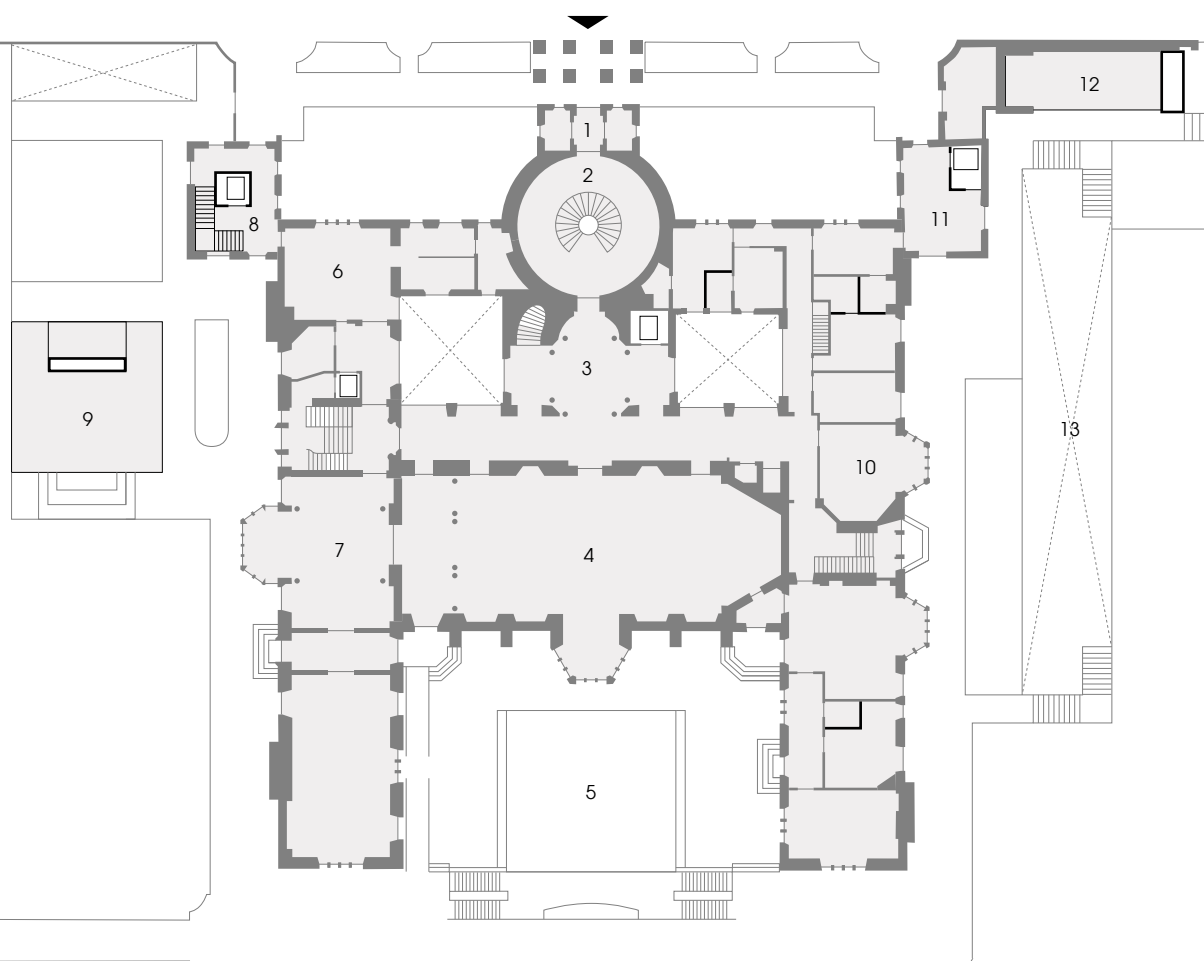


Rhodes House Oxford

Stanton Williams

Ground Level Plan

1:500 @ A4



Key

- | | |
|------------------------------|---------------------------|
| 1. Entrance | 11. East Lodge |
| 2. Rotunda | 12. East Garden Room |
| 3. Parkin Vestibule | 13. Residential Courtyard |
| 4. Milner Hall | 14. Foyer Space |
| 5. 'Giant's Grave' Courtyard | 15. West lightwell |
| 6. Kitchen | 16. East lightwell |
| 7. West Wing | 17. Conference space |
| 8. West Lodge | 18. Office space |
| 9. West Garden Pavilion | 19. Plant Room |
| 10. East Wing | |

