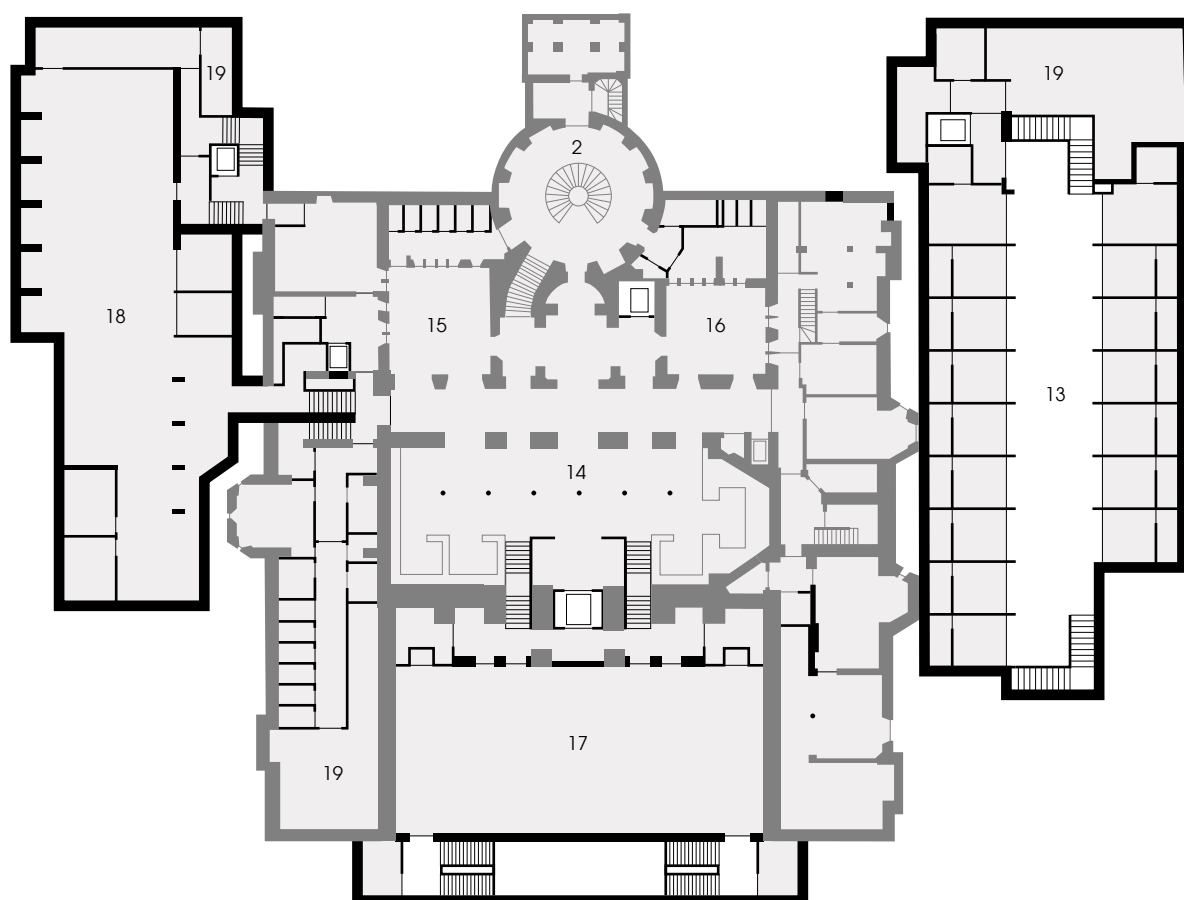


# Rhodes House Oxford

Stanton Williams

## Lower Ground Level

1:500 @ A4



### Key

- |                              |                           |
|------------------------------|---------------------------|
| 1. Entrance                  | 11. East Lodge            |
| 2. Rotunda                   | 12. East Garden Room      |
| 3. Parkin Vestibule          | 13. Residential Courtyard |
| 4. Milner Hall               | 14. Foyer Space           |
| 5. 'Giant's Grave' Courtyard | 15. West lightwell        |
| 6. Kitchen                   | 16. East lightwell        |
| 7. West Wing                 | 17. Conference space      |
| 8. West Lodge                | 18. Office space          |
| 9. West Garden Pavilion      | 19. Plant Room            |
| 10. East Wing                |                           |

