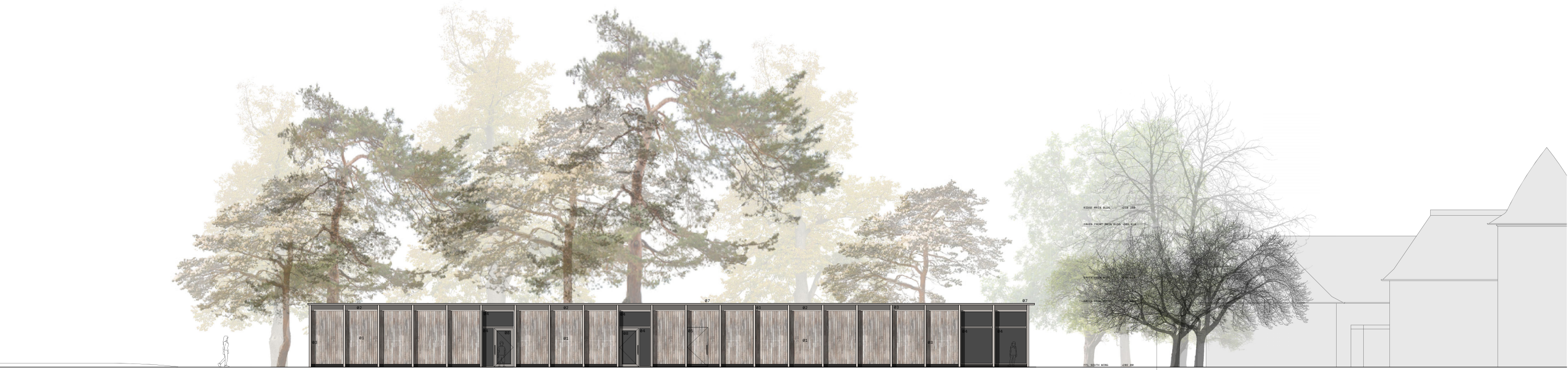


EAST ELEVATION
Scale 1:100



SOUTH ELEVATION
Scale 1:100

LEGEND

- 01 Vertical Formex Scotslarch timber cladding boards
- 02 Horizontal Formex Scotslarch timber cladding boards
- 03 Columns and frame
- 04 Windows - Timber frame in keeping with cladding. Monitor / Vetro.
- 05 Timber clad doors
- 06 As 05 but horizontally clad in 180mm courses, to match every 2nd brick course
- 07 PVC aluminium trim/finishing
- 08 Timber door with glazed insert
- 09 Brick in mortar bed with mechanical header bond. Form marked British by Mowlem/ger or equal and approved.
- 10 Halfway between positions, with entrance way

FORMEX VERTICAL BOARD	+100.000
FORMEX HORIZONTAL BOARD	+100.000
FORMEX WINDOW BOARD	+100.000
FORMEX DOOR BOARD	+100.000
FORMEX CLADDING BOARD	+100.000
FFL SOUTH WING	+100.00
FFL VERTICAL ROOM	+100.70
FFL THERAPY ROOMS	+100.25
FFL CLASSROOMS 1&2	+100.05
DATEL	+100.00

FORMEX VERTICAL BOARD	+100.000
FORMEX HORIZONTAL BOARD	+100.000
FORMEX WINDOW BOARD	+100.000
FORMEX DOOR BOARD	+100.000
FORMEX CLADDING BOARD	+100.000
FFL SOUTH WING	+100.00
FFL VERTICAL ROOM	+100.70
FFL THERAPY ROOMS	+100.25
FFL CLASSROOMS 1&2	+100.05
DATEL	+100.00