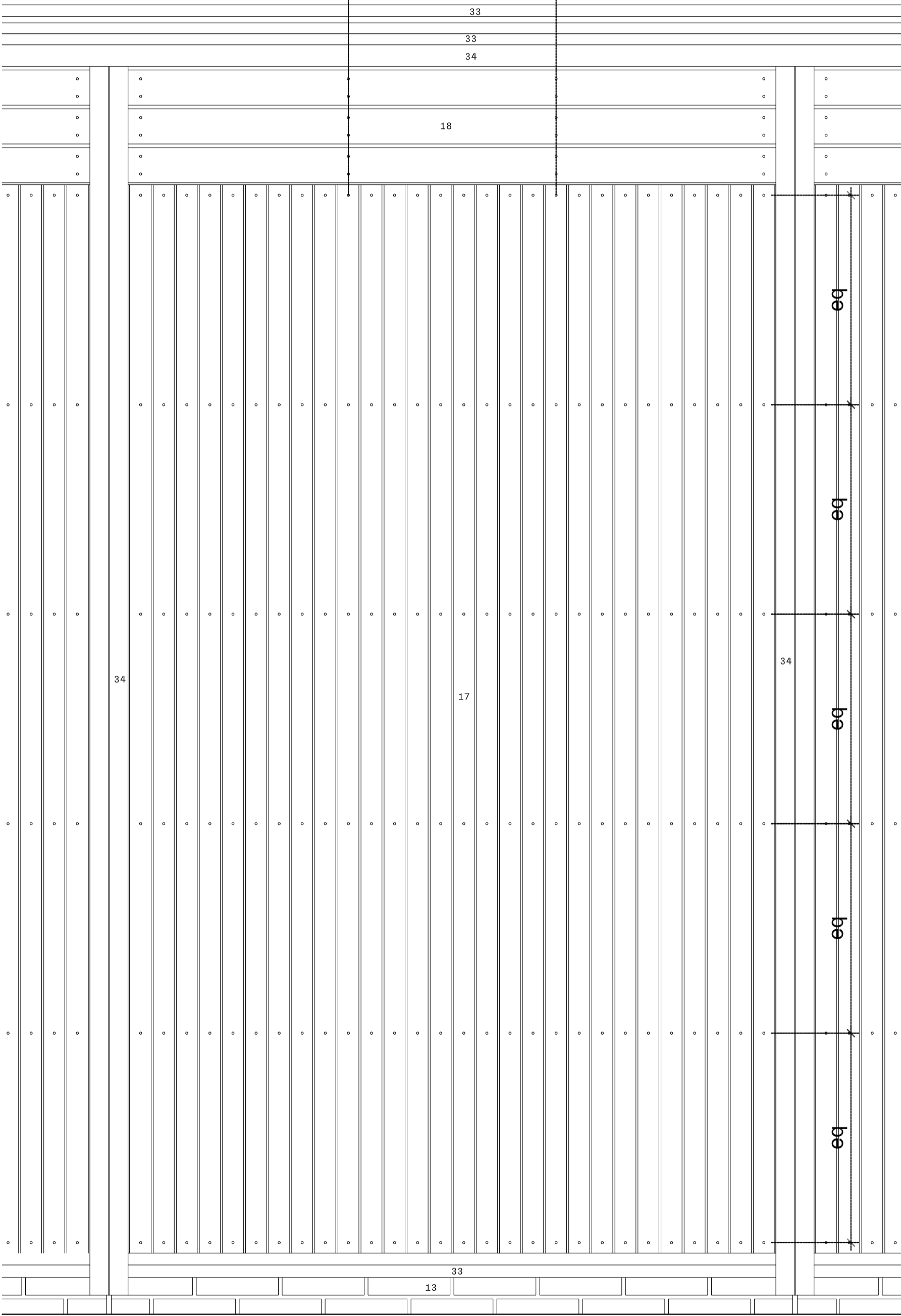


PROPOSED PLAN

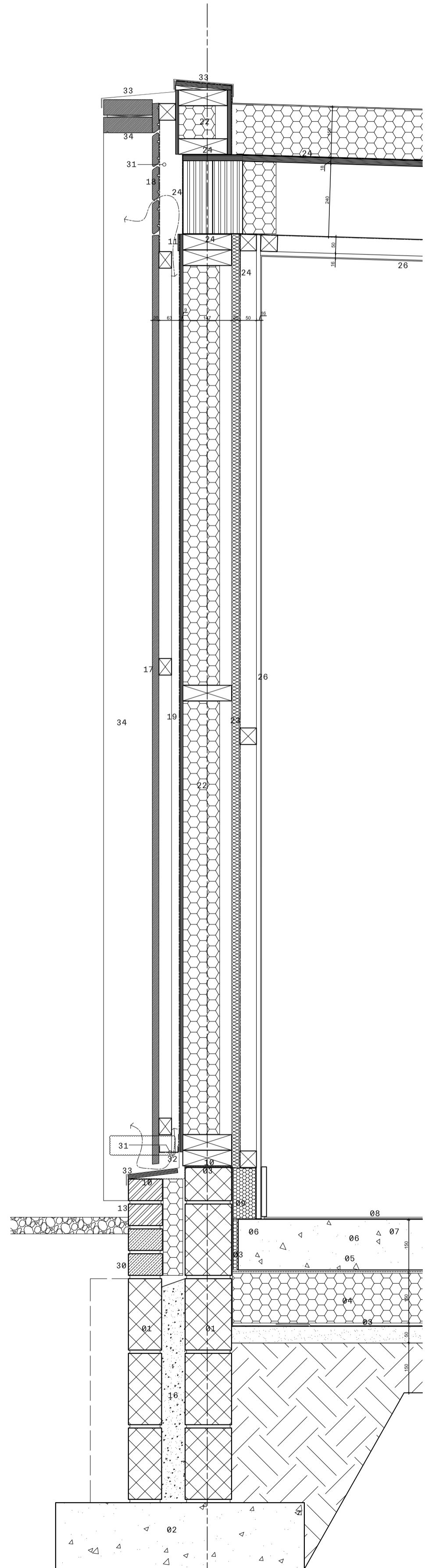
Fixings to be at thirds but centred on closest visible board fixings below



PROPOSED ELEVATION

LEGEND

- 01 Dense blockwork
- 02 Concrete strip foundation
- 03 Damp proof membrane
- 04 150mm reinforced concrete slab
- 05 Insulation
- 06 Polythene separation layer
- 07 75mm sand cement screed.
- 08 Floor finish
- 09 Rigid phenolic foam to slab perimeter
- 10 DPC
- 11 30 mins fire barrier
- 13 Stretcher bond brick with struck horizontal courses. Forum smoked Branco by Wieneberger
- 14 Surface finish material
- 15 Screed to fall to brickslot drain
- 16 Lean mix infill
- 17 Vertical Scottish larch T+G cladding on TSW battens and counter battens. Treated in Norclad Lite and prefinished in Fire Protection
- 18 As 17 but horizontal board Scottish larch cladding.
- 19 Ventilated cavity
- 20 Breather membrane
- 21 OSB sheathing board
- 22 80mm foil faced insulation in timber stud
- 23 25mm foil faced insulation to inside face of timber stud
- 24 Vapour control layer
- 25 50mm service zone
- 26 Plasterboard
- 27 Timber kit lintel
- 28 Insulated catnic lintel
- 29 EPDM
- 30 Common brickwork
- 31 Insect mesh
- 32 2mm PPC aluminium capping with secret fixings
- 33 Breather membrane
- 34 Scot larch beam and post structure with all fixings and joints to be plugged and sealed. Treated in Norclad Lite and prefinished in Fire Protection
- 35 18mm Marine grade plywood
- 36 1.5mm PPC aluminium flashing
- 37 TSW framing
- 38 Timber structure - refer structural engineers
- 39 Mastic sealant
- 40 Painter's caulk
- 41 High performance window/door unit
- 42 Foam fill insulation around window fixing brackets



PROPOSED SECTION